

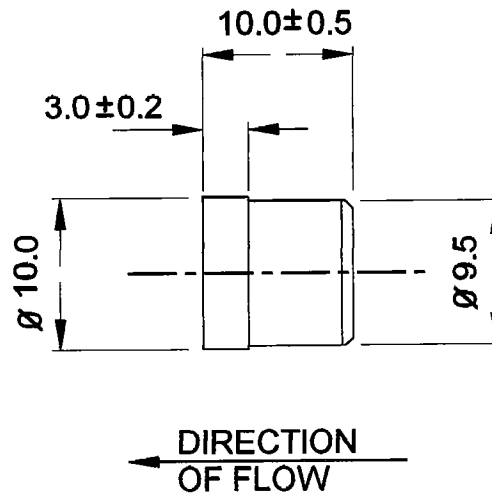
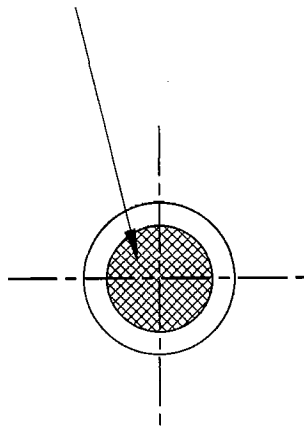
DRAWING No.

BL/D8337

THIRD ANGLE
PROJECTIONDO NOT
SCALE

USED ON BL/

STAINLESS STEEL MESH FILTER

OPENING PRESSURE 7.0 - 10.5 KN/M²FLOWRATE 28 LITRES/MIN @ 3.5KN/M²
ABOVE THE OPENING PRESSURE

MAX REVERSE FLOW 1CC/HR

SEAL INTO POSITION WITH A SUITABLE ADHESIVE



ACTUAL SIZE

| | | | | | |
|--------------------------------|---|------------------------------|---------|---------|--------|
| MATERIAL | FINISH | | | | |
| ALUMINIUM ALLOY | ANODISED | | | | |
| EST.WEIGHT | | ORIGINAL | | 1 | 2-7-99 |
| DIMNS IN MM. | SURFACE ROUGHNESS | CHANGE | MOD.No. | ISSUE | DATE |
| SCALE | | TOLERANCES | | | |
| BROWNELL LIMITED, LONDON, NW10 | | DRAWN | NGH | CHECKED | GGH |
| TITLE | PRESSURE RELIEF VALVE (OUTWARDS) OPENING RELIEF PRESSURE 1 - 1.5 PSI | DRAWING No. BL/D8337 INST | | | |

THIS DRAWING IS THE PROPERTY OF BROWNELL LIMITED AND MAY NOT BE COPIED OR REPRODUCED WITHOUT THEIR PRIOR WRITTEN PERMISSION